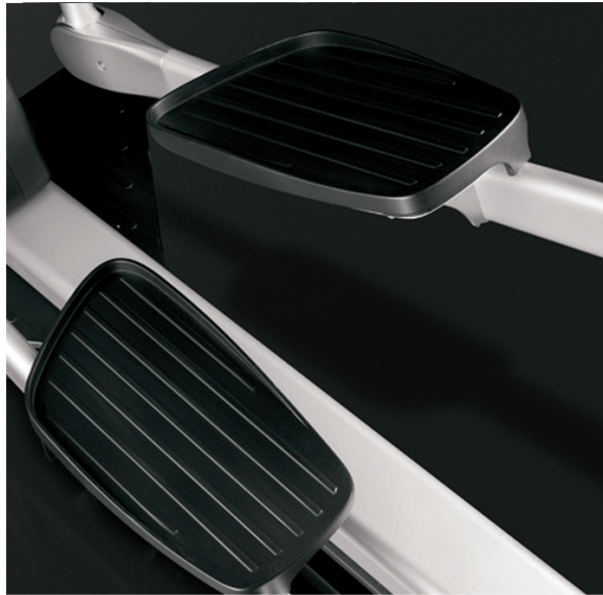




Worldwide Fitness Company

ELLIPTICAL PININFARINA

- LED PLUS / 1PP104



- pininfarina design
- advanced workout programs
- high luminosity led display
- one touch key buttons
- rapid touch control
- energy saving
- hrm: hand sensors and polar telemetry

TECHNICAL SPECIFICATIONS

Difficulty Level	1-16
Resistance	max 700 W (at 140 rpm)
Dimensions	230x70x174 cm
Weight	160 Kg
Length motion	52 cm
Power Supply	100-230 VAC 50/60 Hz
Energy Consumption	50 VA
Warranty (frame)	7 years
Type of effort	electromagnetic

Versions

1PP604	Powered
1PP604A	Self Powered

PANATTA srl

28/10/2022

Via Madonna della Fonte 3/c - 62021 Apiro (MC) Italy

T. +39 0733 611824 - F. +39 0733 611777

www.panattasport.com - info@panattasport.com

Panatta® reserves the right to modify its products and documentation at any time without prior notice. All Panatta® brand and patents are owned by Panatta s.r.l. in Italy and abroad. Panatta © Copyright.

Panatta® si riserva il diritto di modificare i prodotti e la documentazione senza obbligo di preavviso. I marchi ed i brevetti Panatta® sono di proprietà della Panatta s.r.l. in Italia e all'estero. © Copyright Panatta.

The accessories (dumbbells, discs and barbells) are always placed as decorum therefore not included in the machine.